



وَأُذِّنُ فِي النَّاسِ بِالْحَجِّ
"اور لوگوں میں حج کا اعلان کرو۔"

سورة الحج (27)

HAJJ 2026

CATEGORY A

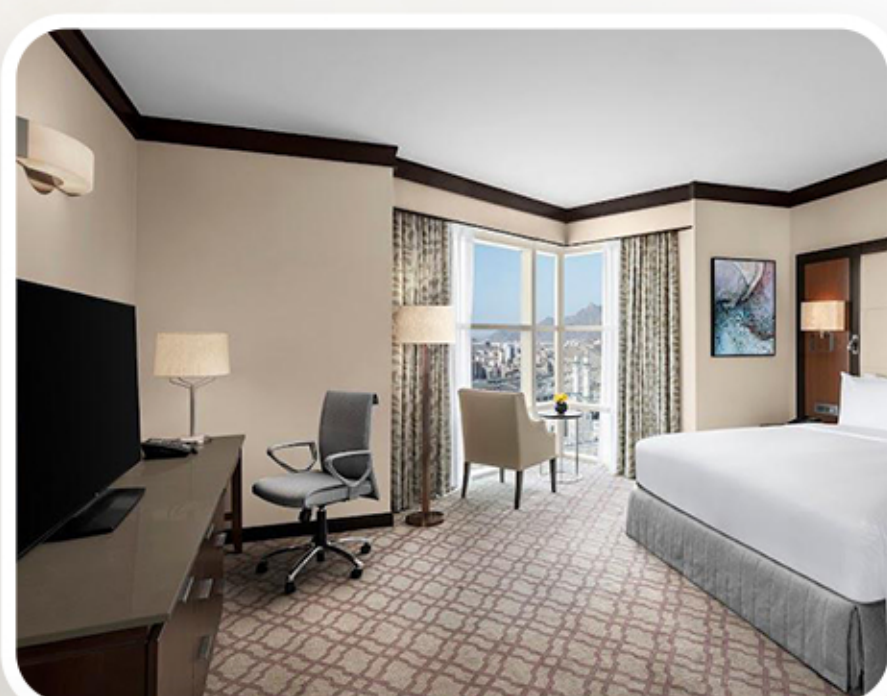
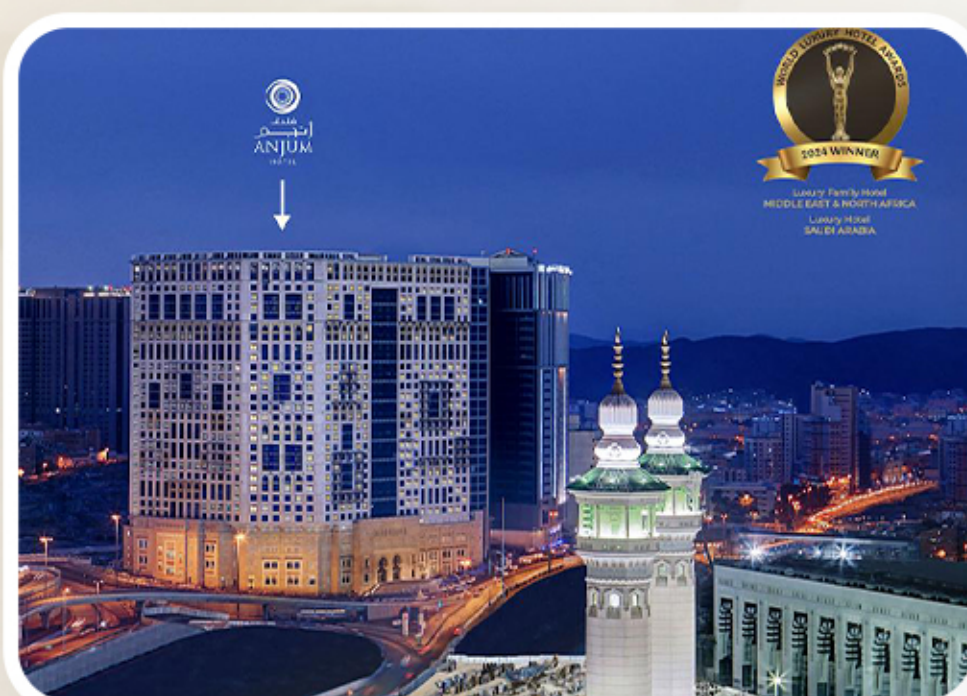
17 DAYS *Executive*



MAKKAH, MADINA, AZIZIYAH HOTELS AND MINA & ARAFAT

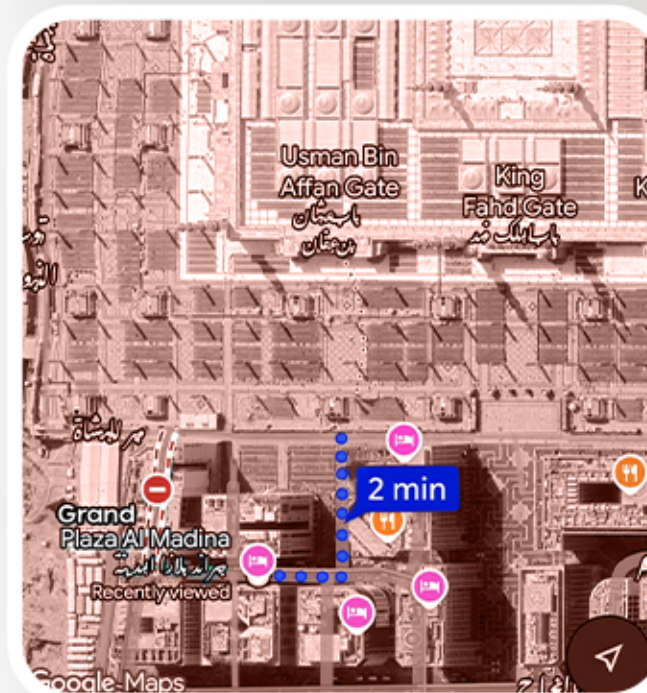
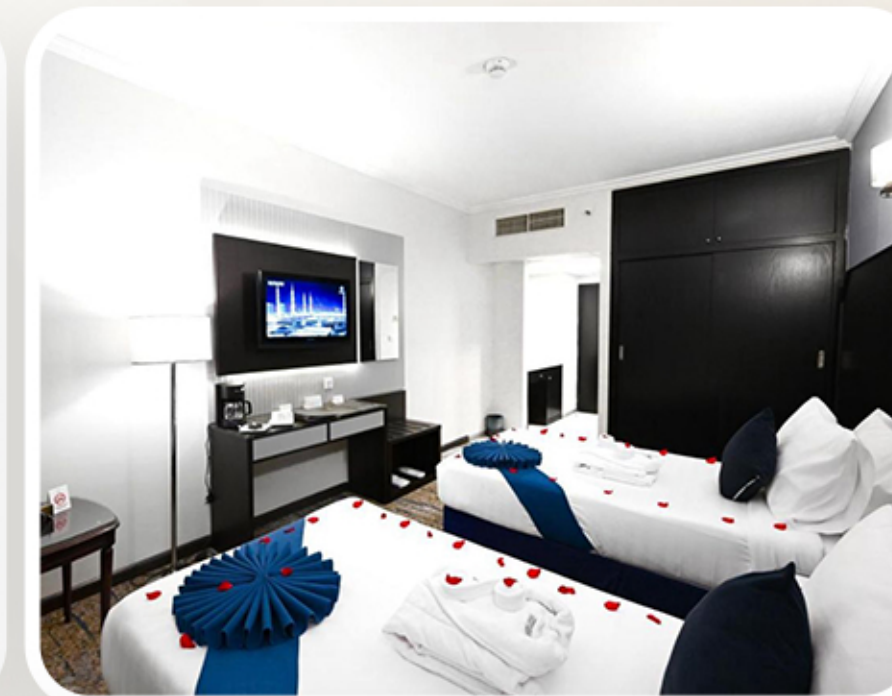
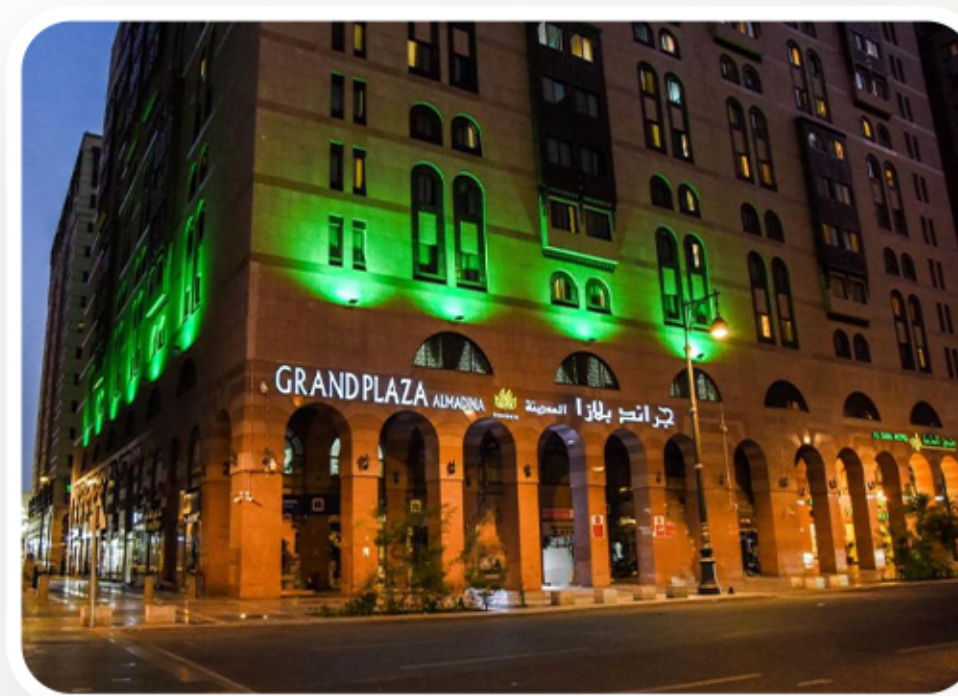
MAKKAH HOTEL

- Meet & Assist
- 5 Star Hotel
- 5 Minutes Walk
- Breakfast & Dinner
- Easy to Access
- Daily room cleaning as per hotel policy
- Double, triple, and quad rooms will be provided as per mentioned in Package



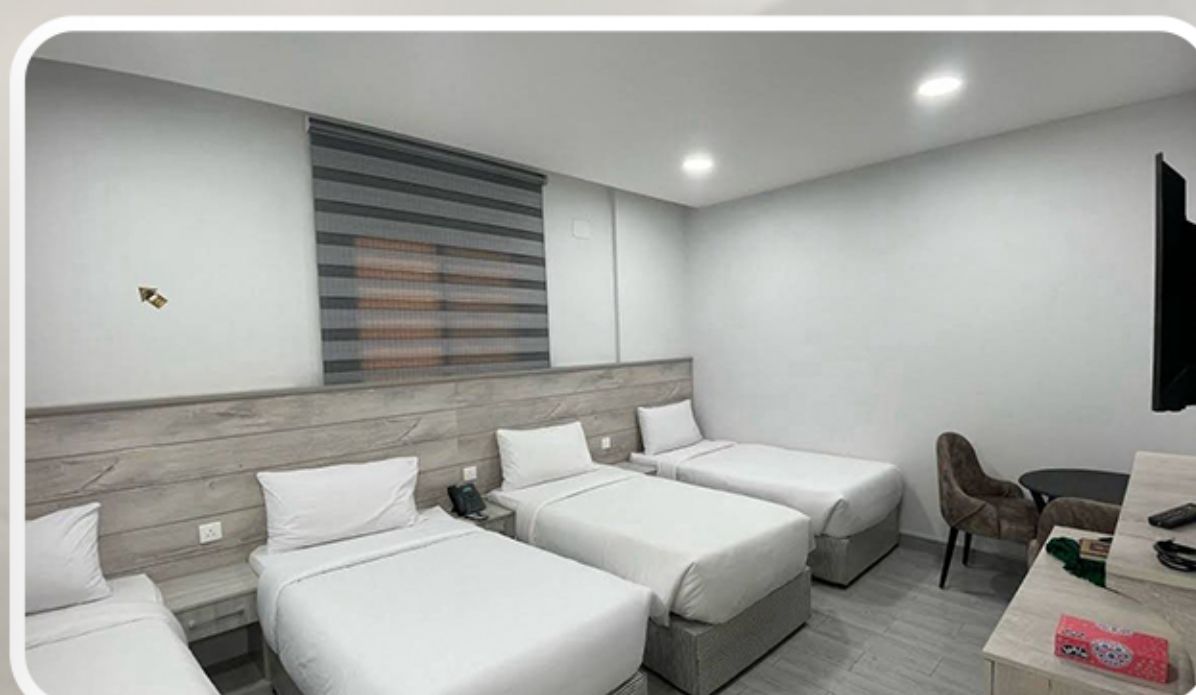
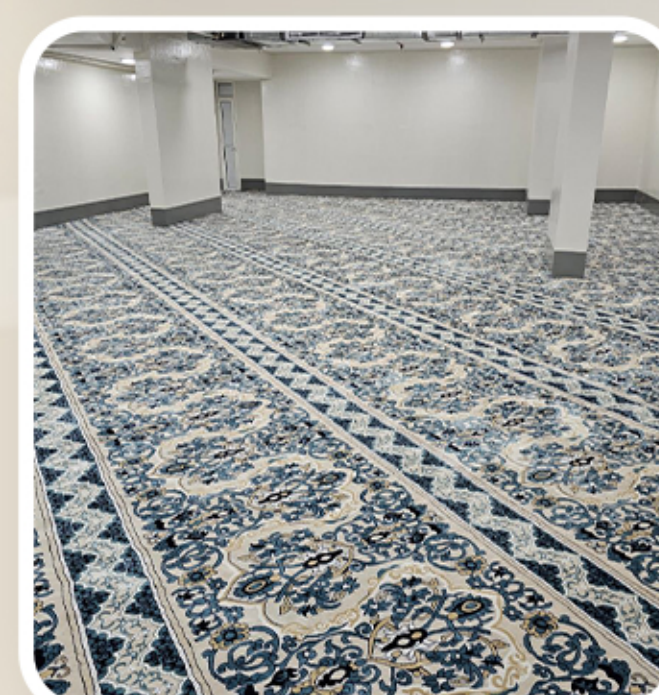
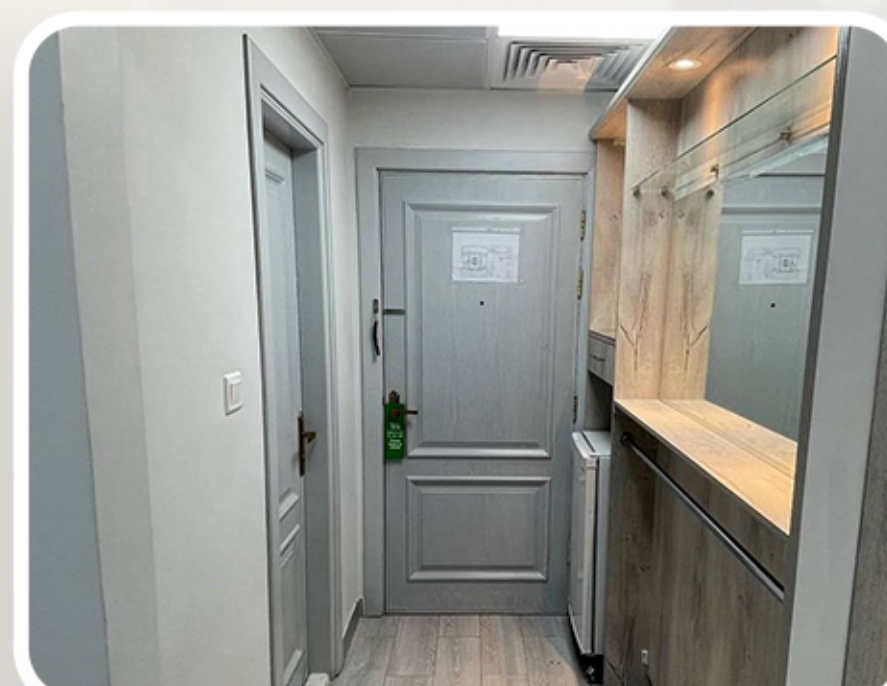
GRAND PLAZA MADINAH

- Meet & Assist
- 4 Star Hotel
- 2 Minutes Walk
- Breakfast & Dinner
- Easy to Access
- Daily room cleaning as per hotel policy
- Double, triple, and quad rooms will be provided as per mentioned in Package



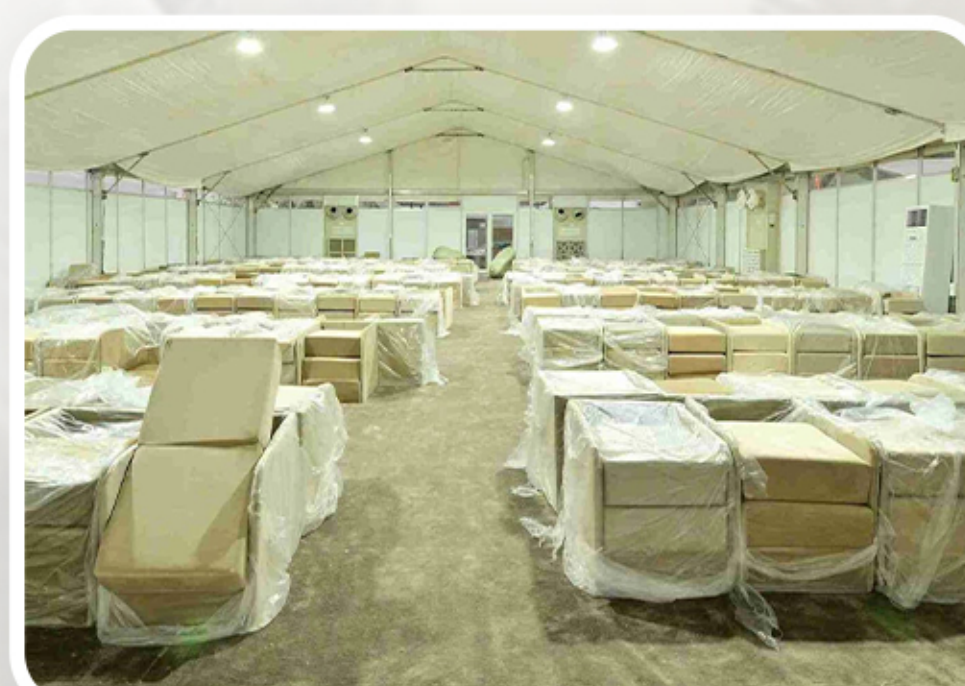
AZIZIYAH

- Meet & Assist
- Daily lectures & Guidance
- 3 Time Meals
- room cleaning as per hotel policy
- Double, triple, and quad rooms will be provided as per mentioned in Package

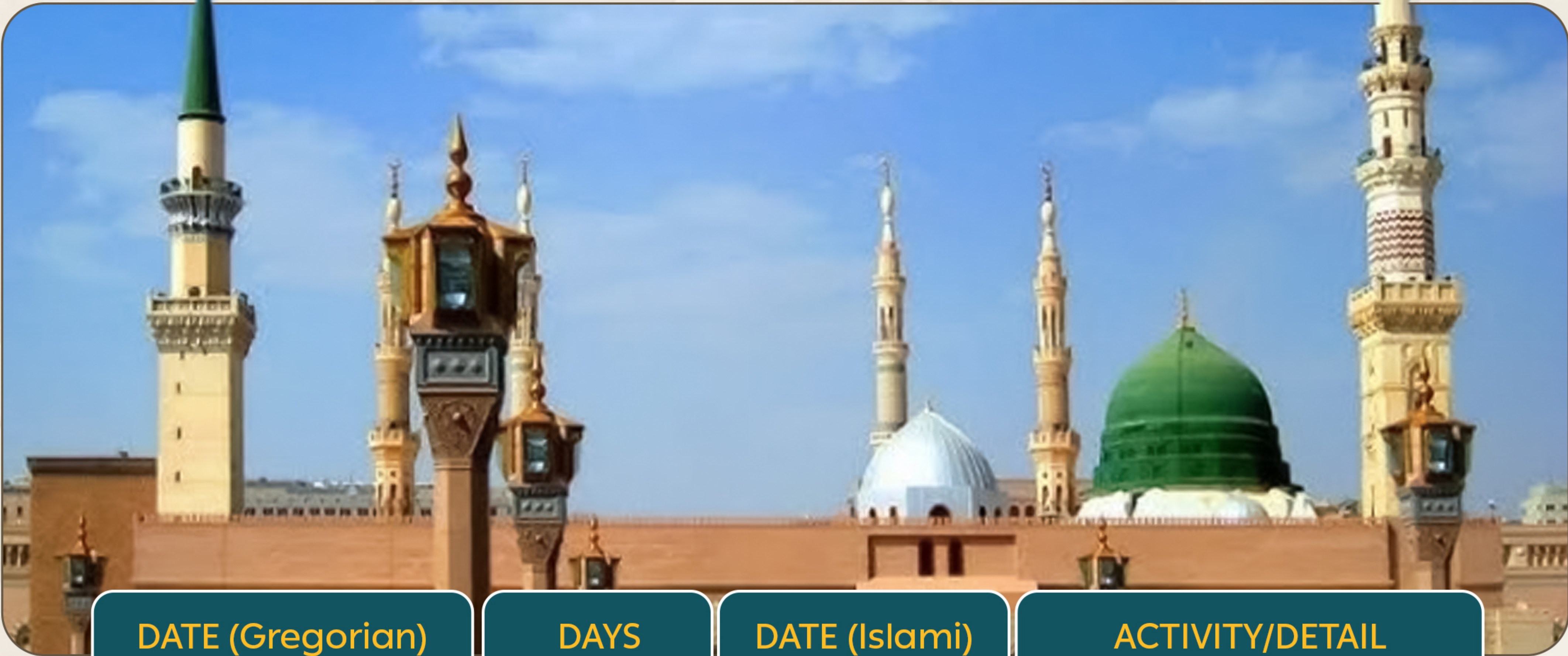


MINA & ARAFAT

- Meet & Assist
- Luxury Camps
- Ac Camps
- Nearest to Jamarat
- 3 Times Buffet Meal
- Gender Sharing Base
- 24/7 Hot & Cold Beverages
- Latest Model Buses For Transportation

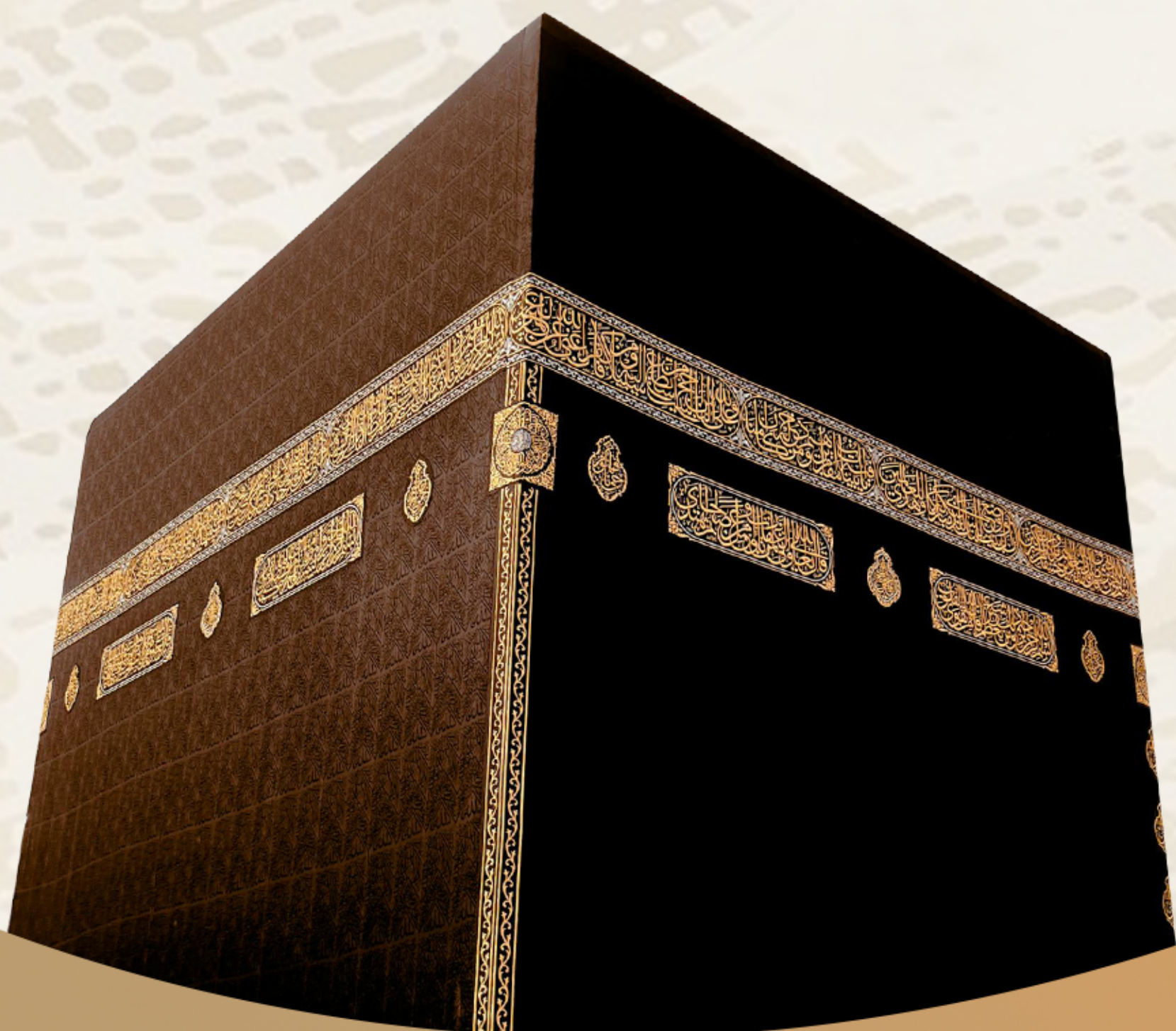


ITINERARY



DATE (Gregorian)	DAYS	DATE (Islami)	ACTIVITY/DETAIL
------------------	------	---------------	-----------------

MONDAY MAY 18, 2026	Flight	01 ZILHAJ	Lahore to Jeddah
18 TO 21 MAY	3 Nights	01 TO 04 ZILHAJ	MAKKAH HOTEL
21 TO 24 MAY	4 Nights	04 TO 07 ZILHAJ	AZIZIYAH
24 TO 29 MAY	5 Days	08 TO 12 ZILHAJ	HAJJ
29 to 31 May	2 Nights	12 TO 14 ZILHAJ	AZIZIYAH
31 May to 03 June	3 Nights	14 TO 17 ZILHAJ	MADINAH HOTEL
WEDNESDAY JUNE 3, 2026	Flight	17 ZILHAJ	DEPARTURE : MADINAH to Lahore



PRICES & PACKAGE DETAILS

MADINA HOTEL / AZIZIYAH SHARING

QUAD BED
2,660,000
PER PERSON PKR

MADINA HOTEL / AZIZIYAH SHARING

TRIPPLE BED
2,690,000
PER PERSON PKR

MADINA HOTEL / AZIZIYAH SHARING

DOUBLE BED
2,760,000
PER PERSON PKR

For AZIZIYAH separate room, additional charges are applicable (Page 5)



PACKAGE DETAILS INCLUDE

- Meet and Assist at Airport
- Management Presence & Step By Step assistance during Complete Hajj Tour
- Accommodation in Aziziyah (4 Persons Sharing Gender based)
Separate room available for families.
- Meals Included in Package
- Tawaf Ziara Services included
- Transport in Tawaf-e-wida service at 13 ZilHaj included
- Shuttle Service Available from Azziyah to Haram for Prayer
- Ziyarat in Makkah & Madinah
- Above Package Includes airfare

Note

Hajj Qurbani Not Included

In case the Saudi Government imposes any Ground Services Charges, the package price will be revised accordingly.

5 DAYS IN HAJJ MASHAIR (8TH ZILL HAJJ-12 ZILL HAJJ)

MINA (8th, 10th, 11th, 12th ZILHAJJ)

Best Closest location in Mina very near to Jamarat. Air Conditioned carpeted Camps in Mina with Gypsum Walls and Doors. 16 persons in one camp, 2-3 Camps can be Combined. Gender based sharing. Up size Sofa cum bed with side arms in Mina + pillow + Blanket Special Buffet Meal provided in Mina Breakfast, Lunch and dinner Buffet + 24 hours Hot and cold beverages (Tea, Coffee, Water, Fruit juice, laban etc) + Ice Cream



ARAFAT

(9TH ZIL HAJJ) AIR CONDITIONED
MARQUEE + BUFFET LUNCH



MUZDALIFAH

QUILTED SLEEPING MAT
+ SNACK BOX

SEPARATE ROOM IN AZZIZIAH

HIGHLY RECOMMENDED LIMITED ROOMS.
AVAILABILITY: FIRST BOOK, FIRST AVAIL BASIS

TRPL BED ROOM

Option can be availed only by family of 3 Persons

PKR **115,000/-** PER PERSON

TWIN BED ROOM

Option can be availed only by family of 2 Persons

PKR **310,000/-** PER PERSON

HAJJ DAYS UPGRADE

HAJJ TRANSPORT

Option of Upgrading Hajj transport to GMC/ Land Cruiser
(Mashair Days) 8th Zil Hajj -12th Zil Hajj

PKR
2,310,000/-

Complete GMC Can be shared by 6 PAX

HELPER FOR Hajj DAYS (5 DAYS)

Facility only available for physically Disabled
(Mashair Days) 8th Zil Hajj -12th Zil Hajj

PKR
235,000/-

Subject to approval from Moalam

Wheel Chair Assistance for Tawaf-e-Ziyarat (Helper)

PKR
235,000/- Per Person

Complete Tour Butler Service (17 DAYS)

PKR
410,000/- Per Person

Thank You
FOR CHOOSING US

CONTACT DETAILS



24/7

+92 327 4999155



49-D Commercial DHA Phase XII
EME Sector Lahore, Pakistan.



www.harramulhajjaz.com



info@harramulhajjaz.com

For More Details

+92 323 4999155

+92 321 7964447