

ISMAIL
MUNAZZAM
REG. NO. 0313



Haram ul Hajjaz
Travel & Tours (Pvt.) Ltd.
Since 2006 | Reg. No. 3230/L

كسره
الله وليك

الحج
2026
هجري ١٤٤٧ هـ

CATEGORY **D**

14 DAYS *Economy*

وَأَذِّنْ فِي النَّاسِ بِالْحَجِّ
"اور لوگوں میں حج کا اعلان کرو۔"

سورة الحج (27)

MADINA HOTEL, MAKKAH BUILDING, MINA & ARAFAT



Since 2006

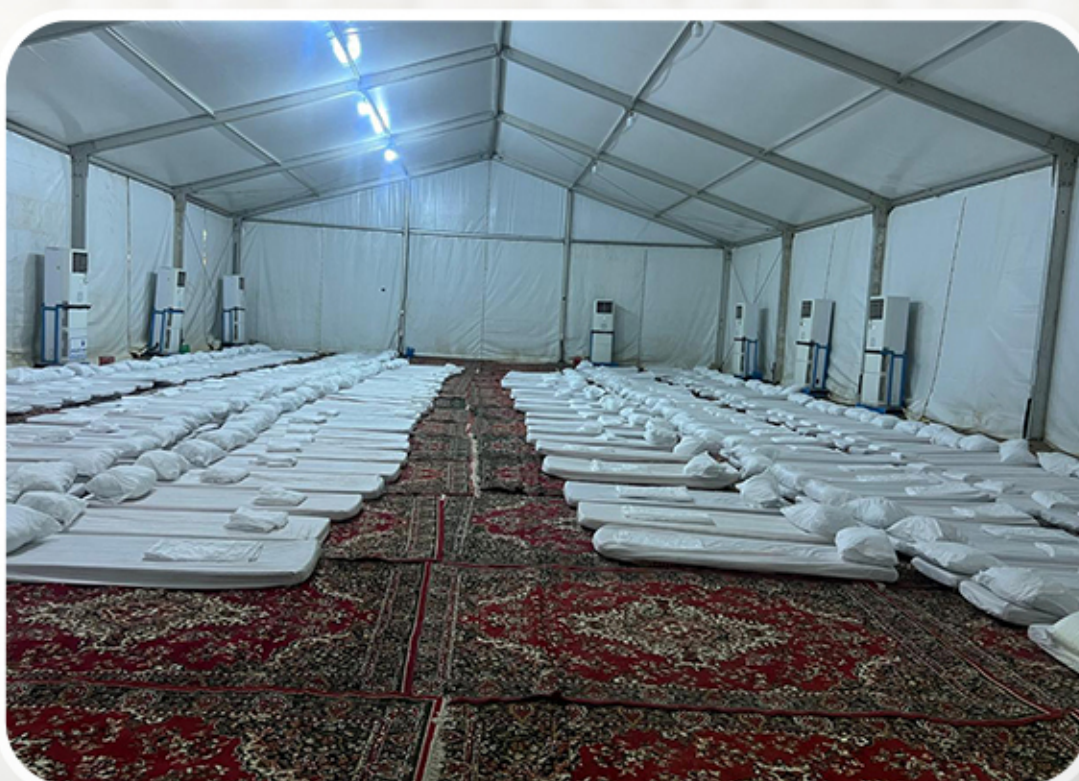
DEYAR AL EIMAN MADINAH

- Meet & Assist
- 3/4 Star Hotel
- 2 Minutes Walk
- Breakfast & Dinner
- Easy to Access
- Daily room cleaning as per hotel policy
- Double, triple, and quad rooms will be provided as per mentioned in Package



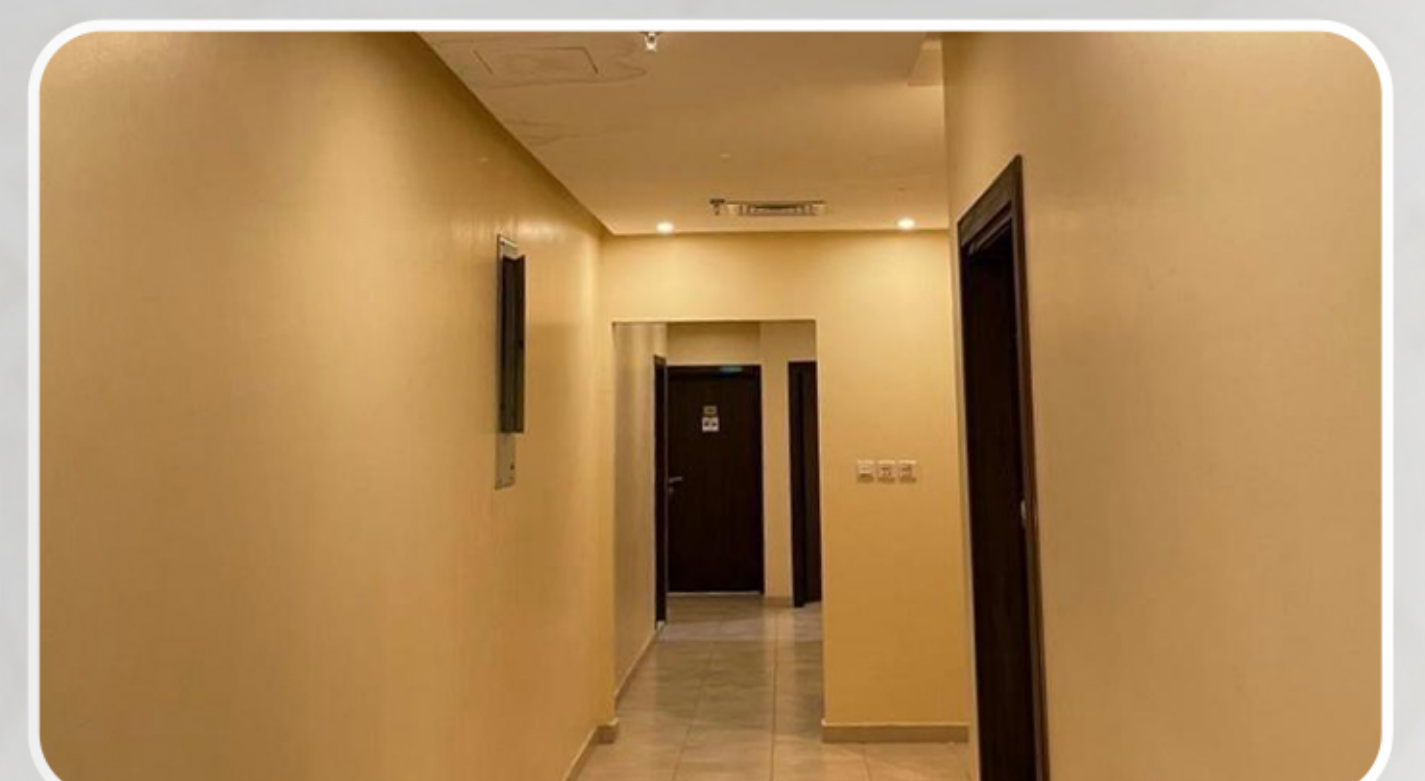
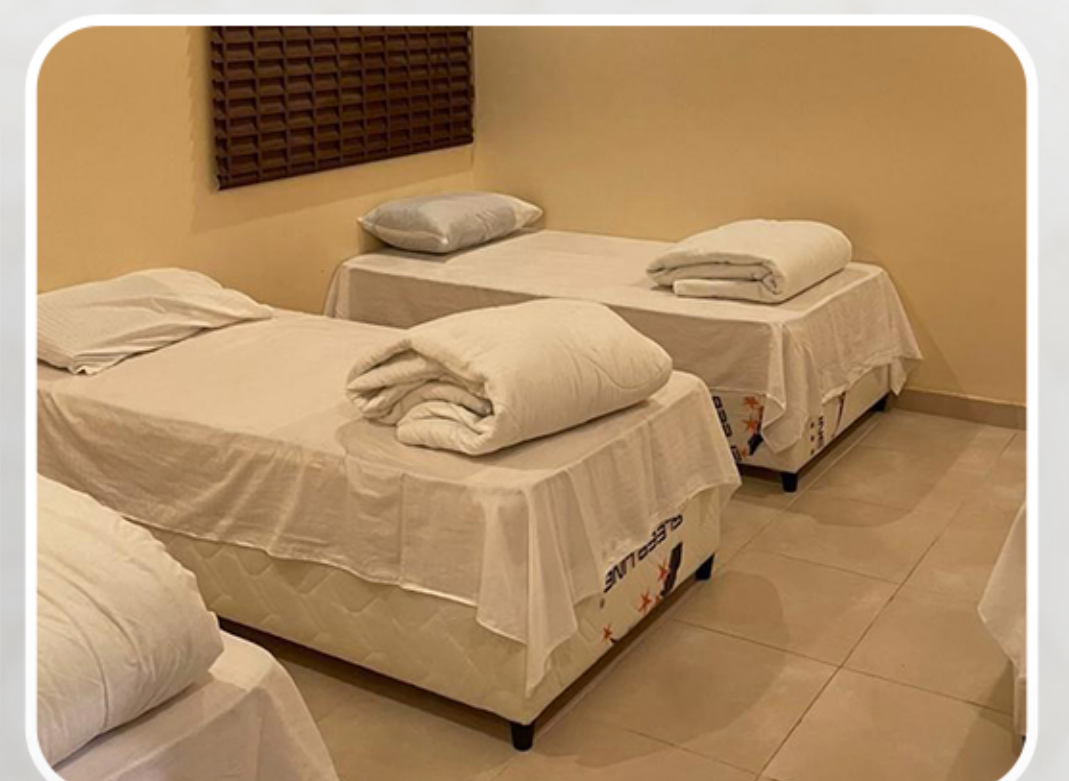
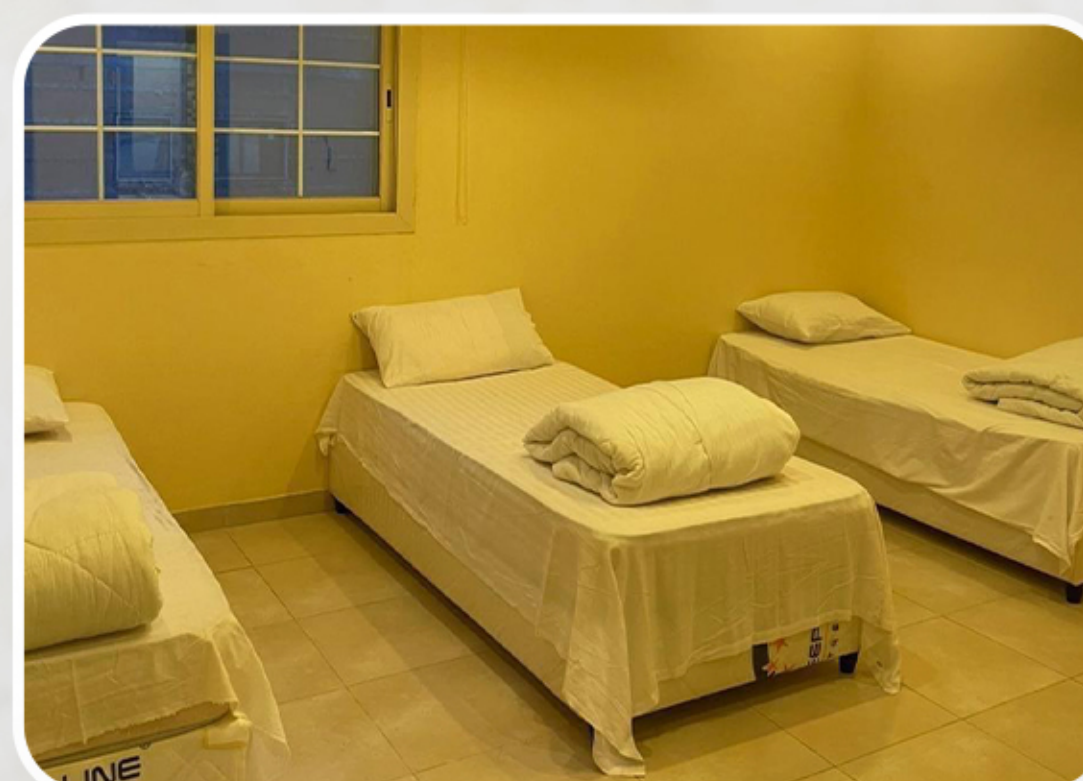
MINA & ARAFAT

- Meet & Assist
- Ac Camps
- 3 Times Meal
- Gender Base Sharing
- 24/7 Hot & Cold Beverages
- Good Model Buses For Transportation



MAKKAH BUILDING

- Meet & Assist
- Daily lectures & Guidance
- 3 Time Meals
- room cleaning as per Building policy
- Double, triple, and quad rooms will be provided as per mentioned in Package



بِسْمِ اللَّهِ وَاللَّهُ أَكْبَرُ

"اللہ کے نام سے، اللہ سب سے بڑا ہے۔"

"In the name of Allah, Allah is the Greatest."

ITINERARY

Date (Gregorian)	Days	Date (Islamic)	Activity / Details
THURSDAY MAY 21, 2026	Flight	04 ZILHAJ	Lahore to Jeddah
21 TO 24 MAY	4 Nights	04 to 07 ZilHaj	Makkah Building
24 TO 29 MAY	5 Days	08 to 12 ZilHaj	HAJJ
29 TO 31 MAY	2 Nights	12 to 14 ZilHaj	Makkah Building
31 MAY TO 03 JUNE	3 Nights	14 to 17 ZilHaj	Madinah Hotel
WEDNESDAY JUNE 03, 2026	Flight	17 ZilHaj	Departure Madinah to Lahore

PRICES & DETAILS



Since 2006

MAKKAH & MADINA HOTEL

QUAD BED
1,590,000
PER PERSON PKR

MAKKAH & MADINA HOTEL

TRIPLE BED
1,630,000
PER PERSON PKR

MAKKAH & MADINA HOTEL

DOUBLE BED
1,655,000
PER PERSON PKR

For MAKKAH BUILDING separate room stay during 4-8 & 12-14 Zilhaj additional charges are applicable (Page 5)

JABL E NOOR
MAKKAH BUILDING

DEYAR AL EIMAN / SIMILAR
MADINA HOTEL
(3 STAR)



PACKAGE DETAILS INCLUDE

- Meet and Assist at Airport
- Management Presence & Step By Step assistance during Complete Hajj Tour
- Accommodation in Makkah Building (4 Persons Sharing Gender based)
Separate room available for families.
- Meals Included in Package
- Tawaf Ziara Services included
- Transport in Tawaf-e-wida service at 13 ZilHaj included
- Shuttle Service Available from Makkah Building to Harram for Prayer
- Ziyarat in Madinah
- Above Package Includes airfare

Note

Hajj Qurbani Not Included

In case the Saudi Government imposes any Ground Services Charges, the package price will be revised accordingly.

5 DAYS IN HAJJ MASHAIR

(8TH ZILL HAJJ-12 ZILL HAJJ)

MINA (8th, 10th, 11th, 12th ZILHAJJ)

3-4 Kilometres distance from jamarat

Air conditioned camps in Mina

25-30 Persons in a camp, 2-3 camps can be combined.

Gender based Sharing

Pillow+blanket+3 time meals + 24 hours hot & cold beverages will be provided in Mina



ARAFAT

(9TH ZIL HAJJ) AIR CONDITIONED
MARQUEE + BUFFET LUNCH



MUZDALIFAH

QUILTED SLEEPING MAT
+ SNACK BOX

SEPARATE ROOM IN MAKKAH BUILDING

HIGHLY RECOMMENDED LIMITED ROOMS.
AVAILABILITY: FIRST BOOK, FIRST AVAIL BASIS

TRPL BED ROOM

Option can be availed only by family of 3 Persons

PKR **40,000/-** PER PERSON

TWIN BED ROOM

Option can be availed only by family of 2 Persons

PKR **125,000/-** PER PERSON

HAJJ DAYS UPGRADE

HAJJ TRANSPORT

Option of Upgrading Hajj transport to GMC/ Land Cruiser
(Mashair Days) 8th Zil Hajj -12th Zil Hajj

PKR
2,310,000/-

Complete GMC Can be shared by 6 PAX

HELPER FOR Hajj DAYS (5 DAYS)

Facility only available for physically Disabled
(Mashair Days) 8th Zil Hajj -12th Zil Hajj

PKR
235,000/-

Subject to approval from Moalam

Wheel Chair Assistance for Tawaf-e-Ziyarat (Helper)

PKR
235,000/- Per Person

Complete Tour Butler Service (14 DAYS)

PKR
410,000/- Per Person

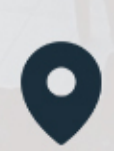
Thank You
FOR CHOOSING US

CONTACT DETAILS



24/7

+92 327 4999155



49-D Commercial DHA Phase XII
EME Sector Lahore, Pakistan.



www.harramulhajjaz.com



info@harramulhajjaz.com

For More Details

+92 323 4999155

+92 321 7964447